



Q-Cover™

Revealing a better way

Universal Blank Cover Assembly

Part Numbers

Assembled:

Q-Cover with JBA..... QCU100

Parts:

Universal Junction Box Adapter..... QJBA

Q-Cover QC100

Application:

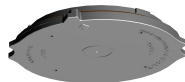
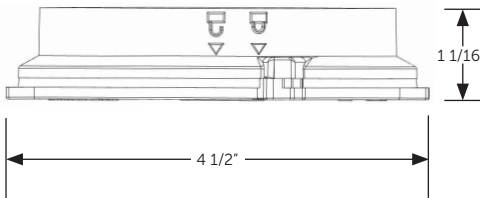
The Q-Cover can be assembled with our QJBA to create a quick way to cover an unused light or provide a water proof cover for existing junction boxes. Also used to connect 3rd party luminaires and other devices to our Q-Hub. Includes mounting holes for 3.5" and 3" devices for a #8 coarse thread screw.

Features:

- No assembly screws
- FicientLock™ System
- 3rd party device mounting holes
- (4) #8 coarse thread plastite screws included

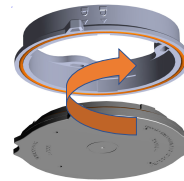
FicientLock™ Technology

QCU100

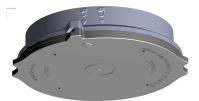


Q-Cover
#QC100

#QJBA



Universal Junction
Box Adapter



Q-Cover with JBA
#QCU100

"Twist, Lock, and It's Water Tight!"

Material Non-metallic, high performance polycarbonate, and high temp rated gasket

Environmental Certified for wet location

Dimensions 1 1/16" H X 4 1/2" W

Packaging QCU100: 15 per box; Box Size: 16"x11.25"x5.19"; Weight: 5 lbs

Mounting Ceiling, wall, or surface mount. Ships with two different style of screws for easy installation



Recyclable
materials



Indoor/
outdoor use



USA Made