



Q-Box™

Revealing a better way to install.

Rigid Non-Metallic Conduit Body & Cover

Part Numbers (sold separately):

Q-Hub.....QH1000S, QH1000
Q-Cover.....QC100



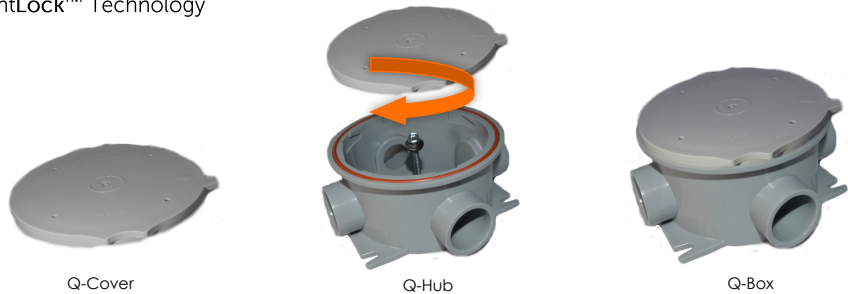
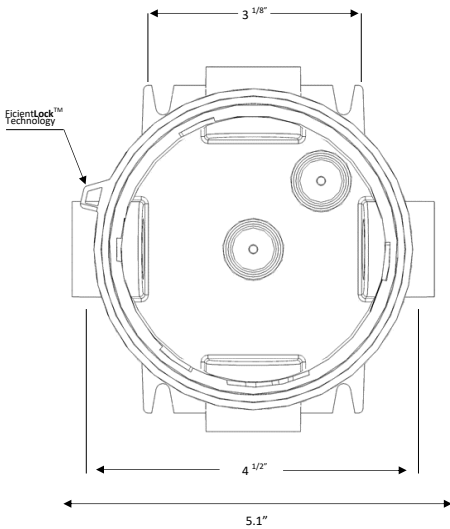
Application:

The Q-Box™ was developed to speed up electrical installations in wet locations. No assembly screws, no gasket to handle, simply twist and lock and it's watertight! The Q-Hub is fitted with our exclusive "FicientLock" system that accepts a blank cover for junctions and the Q-Lume utility jar or LED light fixtures.

Features:

- 2 Open 3/4" hubs and 2 Knockout type at 90°
- Pre-installed screw for quick mounting
- Pre-installed gasket saves time
- No screws needed for assembly
- Inboard and outboard mounting options
- ETL listed for wet locations for US and Canada

FicientLock™ Technology



"Twist , Lock, and It's Water Tight!"

Material.....Non-metallic, high performance polycarbonate and high temp rated gasket

Environmental Ratings... Certified for wet locations

SafetyETL listed, Conforms to UL Std. 5A, Certified to CAN/CSA C22.2 #62.1

Dimensions/Capacity.....2 1/8" Height , 4 1/2" diameter, 19.5 cubic inches

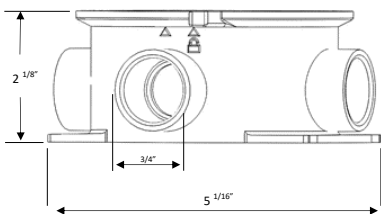
Hub SizeAccepts 3/4" O.D. PVC, non-metallic conduit

Hubs.....2 Open 3/4" hubs and 2 knockout type at 90°

Packaging15 per Box or 96 per box

Weight..... 43lbs. per 100, fully assembled

Mounting.....Ceiling, wall, or surface mount. Ships with a pre-installed 9-15 x 2" shield coated Hex screw with washer or use outboard mounting locations



Q-Box™
Revealing a better way to install.



TOOLS NEEDED: 1/4" Nut Driver, Small flat blade screwdriver

IMPORTANT SAFETY INSTRUCTIONS

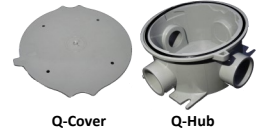
The Q-Box should be installed by a licensed, qualified electrician. Modifying the product or altering the product voids UL Certification Listing. Failure to follow these instructions could result in death, bodily injury, fire, or electrical shock.

- Wet location rated only when cover closed
- For use only on walls, ceilings, or concrete floors
- Not intended for use with ceiling fans or other heavy/large fixtures
- ETL Listed, Conforms to UL Std. 5A, Certified to CAN/CSA C22.2 #62.1

MODEL NUMBERS

Q-Box is made up of these items (sold separately):

- Q-Cover—Model Number QC100
- Q-Hub—Model Number QH1000



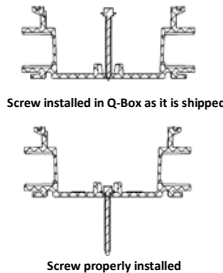
INBOARD MOUNTING

⚠ WARNING

- Must use supplied screw (#9-15 x 2", 1/4" Hi-Hex w/Shoulder and EPDM Bonded Washer, Type S, Shield Coated) or equivalent
- If using any other type of screw, care must be taken to seal around screw head in interior of junction box with an appropriate sealant to insure a water tight seal.
- Failure to follow these instructions voids wet location rating of junction box and may damage wires

NOTE: Q-Box must be attached to a structural part of the building. Mounting to sheet-rock is not permitted.

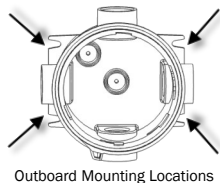
1. Insure bonded washer is present on supplied screw
2. Position Q-Hub onto mounting surface
3. Secure Q-Hub to mounting surface by running supplied screw in until bonded washer is compressed and makes a watertight seal.
4. Insure screw is properly seated as shown.
5. If desired, a second screw can be used in alternate boss that is provided inside junction box,



OUTBOARD MOUNTING

NOTE: Outboard mounting screws are not supplied. Q-Box must be attached to a structural part of the building. Mounting to sheet-rock is not permitted.

1. Position Q-Hub onto mounting surface
2. Secure Q-Hub to mounting surface using locations provided on Q-Hub.
3. It is recommended to use an appropriate screw for the environment, with a shoulder large enough to avoid any slip through the mounting locations.



GLUING

To insure proper adhesion and seal, use the approved glues (or equivalent) below:

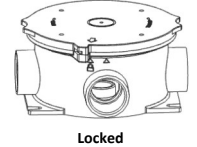
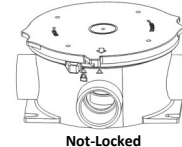
- Oatey All Purpose Cement #30821 For use with PVC, CPVC & ABS
- Oatey ABS to PVC Green Transition Cement #30900
- Oatey Purple Primer #30756 For use with CPVC & PVC
- Oatey Heavy Duty Gray PVC Cement
- Oatey Rain-R-Shine Medium Blue PVC Cement

⚠ WARNING

Use of an unapproved glue may result in connection failure and voids all safety certifications.

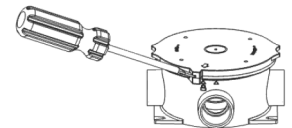
ATTACHING COVER

1. Verify O-ring is in place and secured in gasket groove in Q-Hub. An O-ring that is removed and/or not properly secured in groove may cause water ingress inside Q-Hub.
2. Make sure O-ring is free from any debris, as this can compromise proper compression of the O-ring resulting in a leak point.
3. Position cover so alignment arrows line up. Alignment arrows are located on cover and directly to left of locking hole in Q-Hub. The cover should seat completely into Q-Hub when lined up as described.
4. Lock cover in place by turning it clockwise until a click is heard from cover locking into place. You should feel and hear cover lock into place. Verify cover is locked in place.



REMOVING COVER

Remove cover from the Q-Hub by placing a screwdriver into the slot of the locking mechanism and prying the cover counter clockwise until released from the lock.



CONDUIT OPENINGS

Two conduit openings are intentionally left open to provide the fastest install. If more openings are needed, simply knockout the plug in the Q-Hub using a screwdriver or another tool. When using knockout feature insure knockouts are smooth and free of burrs or other sharp edges that may damage wires.

Nonmetallic fittings can be used in the conduit openings, but they must be a UL approved fitting. In order to maintain a watertight seal, installing a watertight UL approved fitting is required. Only glues stated in this instruction manual (under "gluing" section) should be used.



1 of 2 Conduit openings

⚠ WARNING

All unused openings must be plugged with a UL Approved adaptor.

ALTERNATE OPENING

A target location is provided in the center of the Q-Cover for an alternate fitting opening. When using the alternate opening, drill either a 1/2" or 3/4" hole, whichever is appropriate, for use with a wet location listed cable gland adaptor or other wet location certified adaptor or fitting to insure a water tight seal.

